

*Community Resources for
Justice
Youth Services Department*

For the past 40 years, CRJ's Youth Services Department has been serving youth involved with the Department of Social Services and the Department of Youth Services.

CRJ is one of the few organizations in the country providing both successful direct care programs and, through our Crime and Justice Institute (CJI), cutting edge research and consultation of the best practices for serving youth. Currently, CRJ operates four residential programs (two funded by the Department of Social Services and two funded by the Department of Youth Services), one community re-entry day program funded by the Department of Youth Services, and Watson Academy – an educational enrichment program serving youth from all five programs.

Our goals are to help at-risk and delinquent youth to take charge of their lives by working to overcome their significant internal and external obstacles, and prepare them for a successful transition from our care onto the next stage of their lives (family reunification, foster care or independent living). Through our comprehensive services and supports, we empower youth with the positive attitudes, behaviors, and skills they need to go on to live safe, productive, crime and drug-free lives.



Watson Academy

66 Chestnut Street
Cambridge, MA 02139
Phone: (617)285-7872
Fax: (617)868-5401
E-mail: mrosenthal@crjustice.org

**WATSON
ACADEMY**



*Education
Enrichment
Program for
At-Risk Youth*

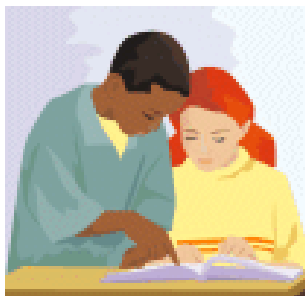
*66 Chestnut Street
Cambridge, MA 02139*

**Tel: (617)285-7872
Fax: (617)868-5401**

What is Watson Academy?

Watson Academy is a privately funded education program designed to enhance the services that our individual youth programs provide for our clients referred through the Department of Youth Services and Department of Social Services.

The mission of Watson Academy is to enhance and enrich education for all youth within Community Resources for Justice. The goal of the Academy is to empower these youth to become successful and live full, productive and positive lives in their respective communities. Watson Academy looks at each youth as an individual and addresses the specific educational needs and goals of each one.



Who does Watson Academy serve?

Watson Academy is designed to enhance and increase the educational services provided at all of CRJ's youth programs. These programs include:

Ambrose House
Mary E. Sargent House
Somerville CRC
Somerville Transition Shelter
Robert J. Watson House

Where is Watson Academy located?

Watson Academy has office space and a resource center at the Robert J. Watson House in Cambridge, MA. Watson Academy services are provided at the individual program sites as well as in the community.

Services for Youth Programs:

Life Skills component:

Watson Academy offers a variety of life skill groups. Youth are eligible to participate in a variety of groups including; anger management and conflict resolution, financial literacy, independent living skills, decision making, self esteem building and transition planning.

Our Life Skills program also incorporates a career component which includes; resume writing, job application skills, interviewing, communication and job readiness, and job searching skills.

GED component:

The GED program operates out of the Somerville Community Re-entry Center where youth are provided individual and whole group instruction, assistance in signing up for the GED as well as financial assistance in registering for the test.

Other services available through the Academy are:

- staff training and development
- referrals to local schools, camps, and local boys and girls club memberships
- cultural enrichment activities
- tutoring services
- community service projects